

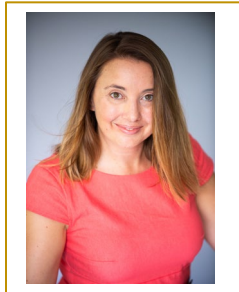
Contact Us

University of Hawai'i at Mānoa
Myron B. Thompson School of Social Work
Gartley Hall, 2430 Campus Road
Honolulu, HI 96822
Phone: 808-956-6003
Email: hcwec@hawaii.edu
Website: www.hcwec.org

Cheri Tarutani, MSW, LCSW
Project Manager
Gartley Hall Rm 001A
Phone: 808-956-6974
Email: tarutani@hawaii.edu



Francie Julien-Chinn, PhD
Principal Investigator
Gartley Hall Rm 214
Phone: 808-956-4929
Email: fjjc@hawaii.edu



UNIVERSITY
of HAWAII®
MĀNOA

Myron B. Thompson School of Social Work Hawai'i Child Welfare Education Collaboration

A partnership between the Department of Human Services Child Welfare Services (CWS) and the Myron B. Thompson School of Social Work to train Master of Social Work students to work in public child welfare.



We seek to provide a training pipeline to develop highly competent social workers in public child welfare in the state of Hawai'i to improve outcomes for Hawai'i's children. The Hawai'i Child Welfare Education Collaboration (HCWEC) provides scholars with specialized coursework in child and family social work, child welfare electives, field placement, and a field integration seminar. Scholars receive stipends in exchange for post-graduate employment in child welfare services for the state of Hawai'i.



Become a CHILD WELFARE SCHOLAR and join the
SPECIALIZED FIELD of CHILD WELFARE

ABOUT THE PROJECT

VISION

A Hawai'i where all children are safe and families are thriving.

MISSION

To build a child welfare system of committed and competent social workers.

PROJECT OVERVIEW

The HCWEC project is needed to help fill the current child welfare services position vacancies statewide and establish a future workforce of experienced child welfare workers. The project will help keep Hawai'i's children safe and increase the level of services for Hawaii's families as well as meet federal and state authority mandates and avoid financial penalties.

Full-time HCWEC scholars receive \$18,000 per year, part-time distance education, or part-time CWS employed scholars receive \$14,000 per year. Scholars commit to a 2-year post graduation employment when receiving one year of stipend and a 3-year post graduation employment when receiving 2 years of stipend.

The HCWEC project is contingent on funding from the Department of Human Services, which is to be confirmed prior to the Fall semester. Students should contact their financial aid officer to discuss how the stipend may impact their financial aid package.

APPLICATION DEADLINE

All applications are due by March 1, 2019

Application form available at: www.hcwec.org

Building the Capacity
of the
Child Welfare
System



PROJECT REQUIREMENTS

- Must be accepted into the MSW program @UH SSW
- Full time students can be in their generalist or specialization year starting Fall 2019 and part-time students must be in their 2nd or last (specialization) year starting Fall 2019
- Must commit to post graduate employment with the State of Hawai'i, Department of Human Services, Social Services Division, Child Welfare Services.
- Must be in the C&F specialization.
- Must agree to practicum placement at Child Welfare Services in their specialization year.
- Must agree to required curriculum in specialization year.
- Must commit to 675 hours of practicum.
- Must have a driver's license.

SPECIALIZED COURSE REQUIREMENTS

Fall	Spring	Required Electives
SW717 Social Work Practice with Children & Families	SW718 Seminar in Social Work Practice with Children & Families	SW672 Child Welfare as a Field of Social Work
SW790 5 credit Field & Field Integration Seminar	SW791 4 credit Field & Field Integration Seminar	SW680 Introduction to Forensic Social Work or SW663 Treatment of Chemical Dependency or LAW590 R Child Welfare Clinic
SW741 Review of Research or SW743/SW744 Independent Research	SW797 Social Welfare Policy	